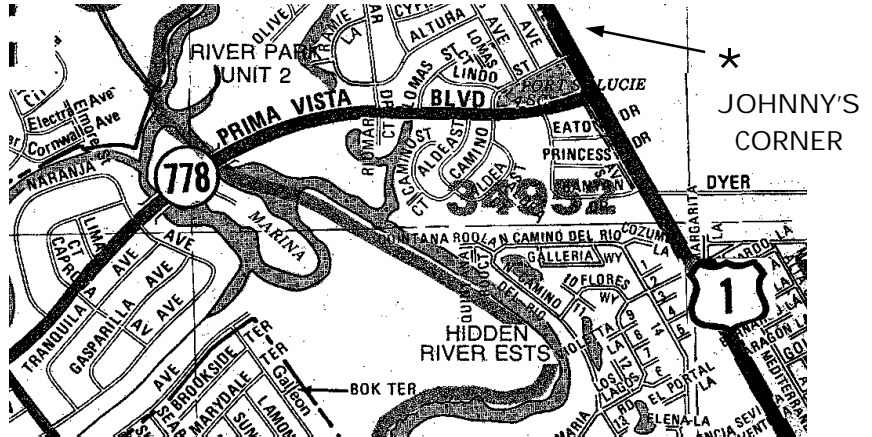


TRUSS TOPICS

WEDNESDAY APRIL 18th MEETING TO BE HELD AT JOHNNY'S CORNER IN PORT SAINT LUCIE

The April regular business meeting of the South Florida Truss & Component Manufacturers Association will be held at Johnny's Corner Restaurant at 12:00 noon on Wednesday, April 18th, 2001. This is an open meeting and topics of discussion will include local code issues, membership development and participation in our chapter. Please

make plans to attend this luncheon at Johnny's Corner Family Restaurant, 7180 South US 1, Port St. Lucie,



Florida, 561-878-2686. Johnny's Corner is on the east side of US1 just north of the corner of US1 and Prima Vista in Port Saint Lucie, Florida. This very informative meeting is open to all. Please call Ken Bucek if you plan to attend. 1-561-509-6000. Reservations are not required but very helpful. SEE YOU THERE ON WEDNESDAY APRIL 18th !!!

NEW TRUSS TECHNICIAN TRAINING RECERTIFICATION EXAMS AVAILABLE FOR LEVEL I & II

Has your Level I or Level II certification expired? If you received it over two years ago, then you are now eligible to take a re-certification exam. Check the expiration date on your certificate or call WTCA for more information. All participating companies that have truss technicians whose certificates have expired have been notified by mail.

In order to become re-certified as a Level I or Level II Truss Technician, individuals must take a re-certification exam. Download and complete the appropriate exam, then mail to WTCA when complete. The cost of each re-certification is \$50 per exam for WTCA members and \$70 per exam for non-members. If you mail in five or more exams, a \$5 discount per exam applies. The re-certification exams are available to download at www.woodwards.com.



MORE BENEFITS OF WTCA MEMBERSHIP

"WTCA's Recommended Policy for Review of Manufactured-Component Product Placement Plans for Construction Projects in Which a Professional Building Designer is Required"

DEFINITIONS:

"Building Structural System" shall mean the completed combination of structural elements, connections and systems, which serve to support the building's self weight, and all applicable live and environmental loads.

"Professional Building Designer" shall mean the individual or organization responsible for the overall design of the Building Structural System in accordance with all legal requirements, and with respect to compliance of applicable state architectural and engineering registration laws. The Professional Building Designer may be an architect, or the engineer of record.

"Building Structural System Design Documents" shall mean the architectural drawings, structural drawings, and any other drawings, specifications, and addenda which set forth the overall structural design of the Building Structural System and which are issued by the Professional Building Designer.

"Component Supplier" shall mean an individual or organization engaged in the supplying and/or manufacturing of manufactured-component products.

"Contractor" shall mean the individual or organization responsible for constructing the building in accordance with all legal requirements, the Building Structural System Design Documents and the Manufactured-Component Submittals. The term "Contractor" shall include those subcontractors who have a direct contract with the Contractor to perform all or a portion of the storage, handling, and installation of the manufactured-component products.

"Placement Plan" shall mean the drawing identifying the location assumed for each manufactured-component based on the Component Supplier's interpretation of the Building Structural System Design Documents. The Placement Plan will reflect a component identifying mark and perhaps other products and structural elements supplied by the Component Supplier so that they may be more easily identified by the Contractor during field erection.

"Manufactured-Component Submittals" shall mean those individual component design drawings/calculations and the Placement Plan, if required by the contract, submitted to the owner, Professional Building Designer and Contractor for their review and approval.

BACKGROUND:

Placement Plans, when required by the Building Structural System Design Documents, are prepared by the Component Supplier for the purpose of assisting Contractors and code

(Continued on page 3)

(Continued from page 2)

enforcement officials in correctly locating individual members in a particular structure. The Placement Plan contains no structural information and requires no engineering knowledge and calculations. It is not an engineered drawing and is not intended to replace the Building Structural

System Design Documents; it is only a guide for installation and requires no engineering input. As such it should **never** be "sealed" by the Component Supplier or the Professional Building Designer. Nevertheless, if a Placement Plan is required, it must be reviewed and approved by the Contractor and the Professional Building Designer.

This policy statement is offered as a means of improving the coordination between the Professional Building Designer, Contractor, Component Supplier and the code enforcement official regarding the review and approval of the Placement Plans for these products.

SEQUENCE OF EVENTS:

1. Placement Plans are prepared by the Component Supplier based on the supplier's interpretation of information shown on the Building Structural System Design Documents prepared by the Professional Building Designer.
2. Placement Plans and component design drawings/calculations are presented by the Component Supplier to the Contractor for review and approval, use in obtaining the construction permit and for use in the installation of the individual manufactured-component products.
3. The Contractor submits Placement Plans and component design drawings/calculations to the Professional Building Designer for review and approval.
4. The Professional Building Designer completes the review of the Placement Plans and component design drawings/calculations and submits a copy of these documents to the building department, showing their "shop drawing approval" stamp.
5. The code enforcement official for the building department makes note that the Professional Building Designer has received, reviewed and approved the Placement Plan(s) and component design drawings/calculations. The code enforcement official reviews and approves the component design drawings/calculations and Placement Plans.
6. The appropriate building permit is issued.

RECOMMENDED POLICY:

A Placement Plan may be prepared by the Component Supplier to be used as a guide for the location of the manufactured-component products within a structure.

The location of the manufactured-component products may be critical with respect to the design of the Building Structural System and, therefore, it is within the scope of responsibility of the Professional Building Designer to review the Placement Plan(s).

The Professional Building Designer must review and approve the Placement Plan(s) and apply the appropriate "shop drawing approval" stamp.

The "approved" Placement Plan(s) must be forwarded to the code enforcement official.



2001 BOARD OF DIRECTORS

PRESIDENT: BOB BECHT
 VICE-PRES: KEN BUCEK
 SECRETARY: TINA BECK
 TREASURER: JOE LAWSON
 PAST PRES: JOHN LEASOR
 PAST PRES: KIRK CRUZE
 BOARD REP: BRAD LAMBERT



South Florida Truss & Component
 Manufacturers Association
 2001 Membership Roster

- A-1 Roof Trusses, Inc.
- Alpine Engineered Products
- Carpenter Contractors of America
- Chambers Truss, Inc.
- East Coast Lumber
- Half Mile Lumber Company
- MiTek Industries, Inc.
- Production Truss & Fab. Corp.
- Robbins Engineering Inc.
- Scosta Corp.
- Simpson Strong-Tie Company, Inc.
- St. Lucie Truss Corp.
- The Truss Office
- Timber Products Insp. Bureau
- Truswal Systems
- U.S. Truss, Inc.
- USP Lumber Connectors



2001 CALANDER OF EVENTS

MONTH	DATE	PROGRAM	LOCATION	TIME
April	18	Open Meeting	Johnny's Corner	12:00 NOON
April	26-29	SETMA	Nassau, Bahamas	
May	3-4	WTCA Open Quarterly Meeting	Washington, D.C.	
May	17	Open Meeting	Palm Beach Hilton	12:00 NOON
June	21	Putting a Human Face on the Truss Industry	Chamber Truss, Inc.	12:00 NOON
July	10	Golf Tournament	P.G.A. National	7 A.M.
July	26-28	WTCA Open Quarterly Meeting	Portland, OR	



**NEW "INDUSRTY LINKS"
 PROGRAM ANNOUNCED**

WTCA is undertaking a program called "Industry Links," to encourage our members to communicate with their suppliers about the benefits of supporting and being actively involved with our association and industry. Articles by WTCA's [Marketing Chair Ken Cloyd](#) and [Carl Schoening of Simpson Strong-Tie](#), which appear in the April issue of **WOODWORDS** magazine, concisely explain why WTCA believes that more active supplier involvement in our industry will take us to the next level. Also, WTCA component manufacturers can make our industry stronger by simply encouraging their suppliers to participate, especially those that haven't been involved in the past. Please visit the WTCA web site at www.woodtruss.com for more information on how you can participate in this exciting new program.