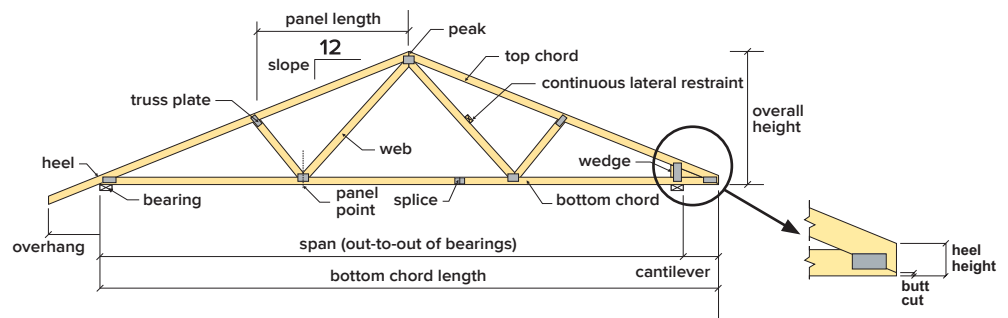


## TRUSS CONFIGURATIONS

### Truss Terms:

The terms below are typically used to describe the various parts of a metal plate connected wood truss. The truss profile, span, heel height, overall height, overhang and web configuration depend on the specific design conditions and will vary by application.



### Two Basic Types of Trusses:

The pitched or common truss is characterized by its triangular shape. It is most often used for roof construction. Some common trusses are named according to their web configuration, such as the King Post, Fan, Fink or Howe truss. The chord size and web configuration are determined by span, load and spacing. All truss designs are optimized to provide the most economical configuration for the specific application.

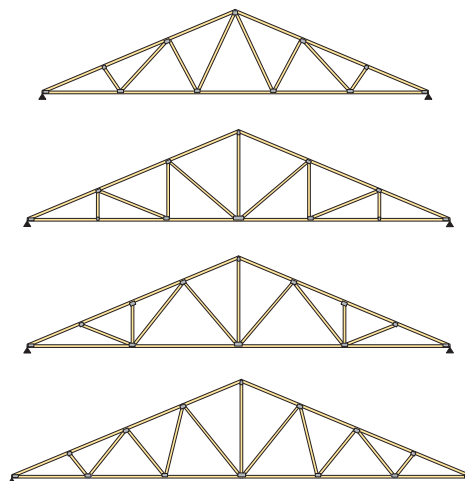
The parallel chord or flat truss gets its name from having parallel top and bottom chords. This type is often used for floor construction, but can also be used in roof applications.

The Framing the American Dream study suggests that installing roof trusses, wall panels or floor trusses completes the task of framing in less time, requires less framer skill and experience, uses less material and ultimately results in a more reliable structure.

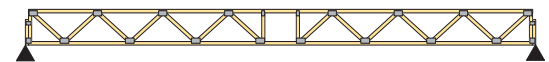
[sbcindustry.com/fad](http://sbcindustry.com/fad)



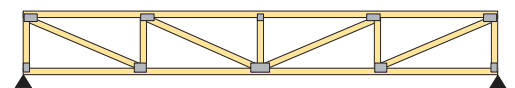
**STANDARD ROOF TRUSS CONFIGURATIONS**



**PARALLEL CHORD**



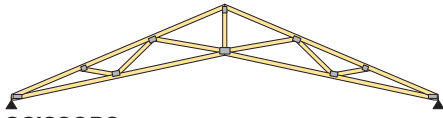
**4x2 FLOOR TRUSS WITH CHASE**



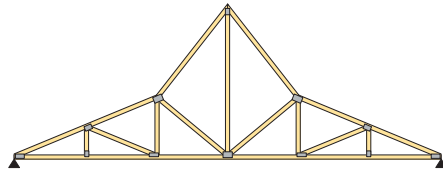
**2x4 FLOOR OR ROOF TRUSS (CAN DESIGN WITH A CHASE AS WELL)**

# Truss Configurations:

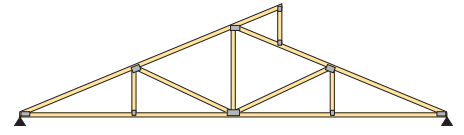
The following examples represent some of the possible variations on the basic types of trusses. The only limit to the design is your imagination!



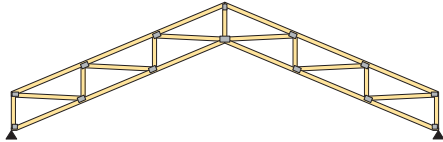
**SCISSORS**



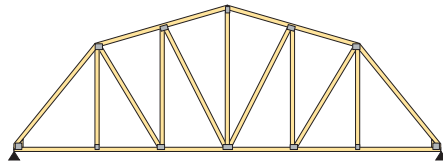
**POLYNESIAN**



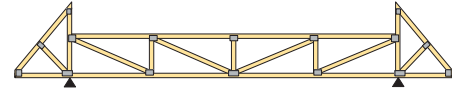
**CLERESTORY**



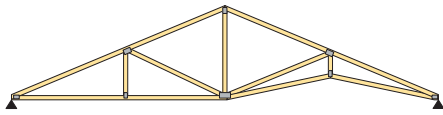
**VAULTED PARALLEL CHORD**



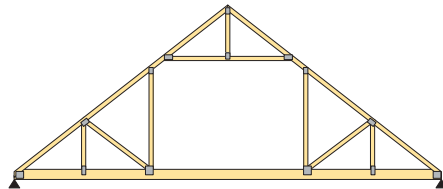
**GAMBREL**



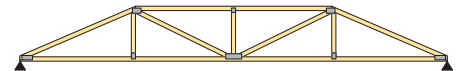
**CANTILEVERED MANSARD W/PARAPETS**



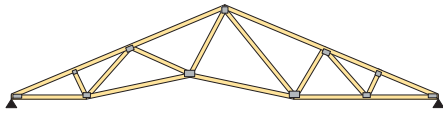
**VAULT**



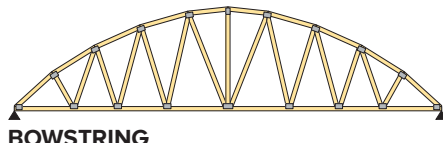
**ROOM-IN-ATTIC**



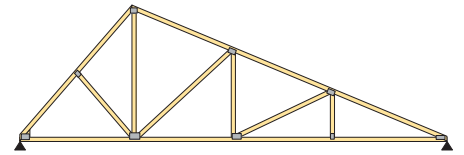
**HIP**



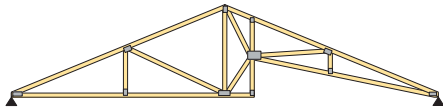
**FLAT VAULT**



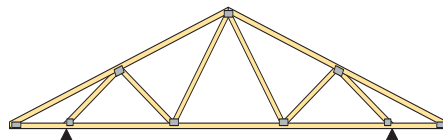
**BOWSTRING**



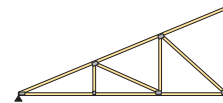
**DUAL PITCH**



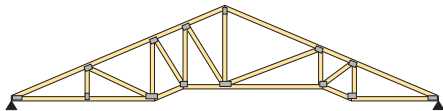
**STUDIO VAULT**



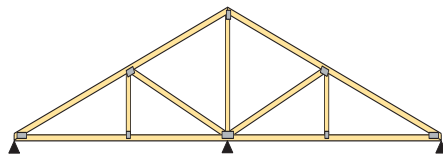
**DOUBLE CANTILEVER**



**MONO**



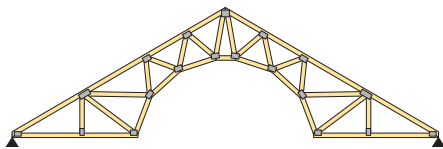
**TRAY OR COFFER**



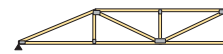
**TRI-BEARING**



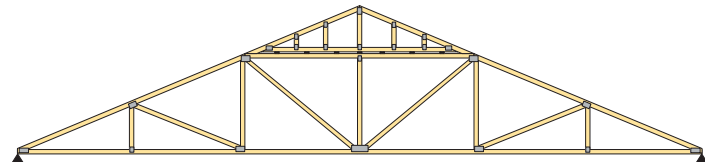
**SCISSORS MONO OR HALF SCISSORS**



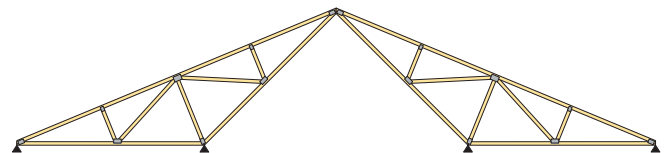
**BARREL VAULT**



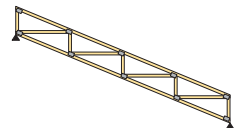
**HALF HIP**



**MULTI-PIECE (PIGGYBACK)**



**DOUBLE INVERTED**



**SLOPING FLAT**

**SBCA**

**Structural Building Components Association**

6300 Enterprise Lane • Madison, WI 53719

608-274-4849 • 608-274-3329 fax

sbcindustry.com • sbca@sbcindustry.com